

Instructions for use of the Electric Pallet Stacker

(KLD-DS, KLA08-A, KLA10-A, KLA12-A, KLD12-DA/K, KLD16 -DA/K, KLD20DD,)

Jiangsu Keli Machinery Co., LTD

First edition in 2024

You must understand this manual and various warning labels on the car before use. Pictures are for reference only, and the product is subject to the physical object.

2024VER.1

Preface

Welcome to use the company's electric stacking car, the car is made of special profiles, compact design, durable, easy to operate. For your safety and correct operation, please understand the instructions and various warning labels on the car before use.

pay attention to:

All the parameters here are subject to the date of publication of this manual. We reserve the right to change our products without notice. If you want to know the latest product parameters, please contact us.

explain

The forklift manufactured by our company is only used in the field (factory) in the factory area, tourist attractions, amusement places and other specific areas stipulated in the Special Equipment Safety Supervision Regulations.

Catalogue

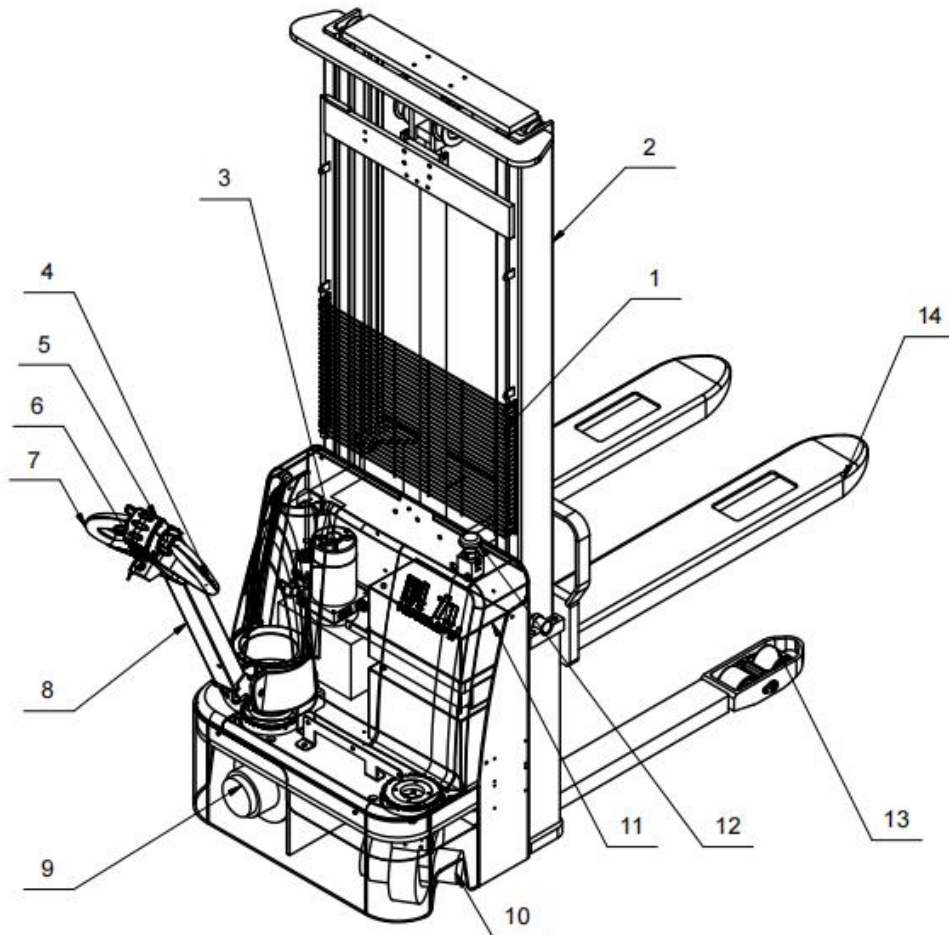
1. Range of application.....	4
2. Vehicle brief.....	4
3. Safe code.....	25
4. Battery.....	27
5. Debugging.....	28
6. Maintenance.....	30
7. Schematic diagram.....	33

1. range of application

KLDS type leg forklifts are storage forklifts specially designed for high altitude stacking and peaceful transportation.

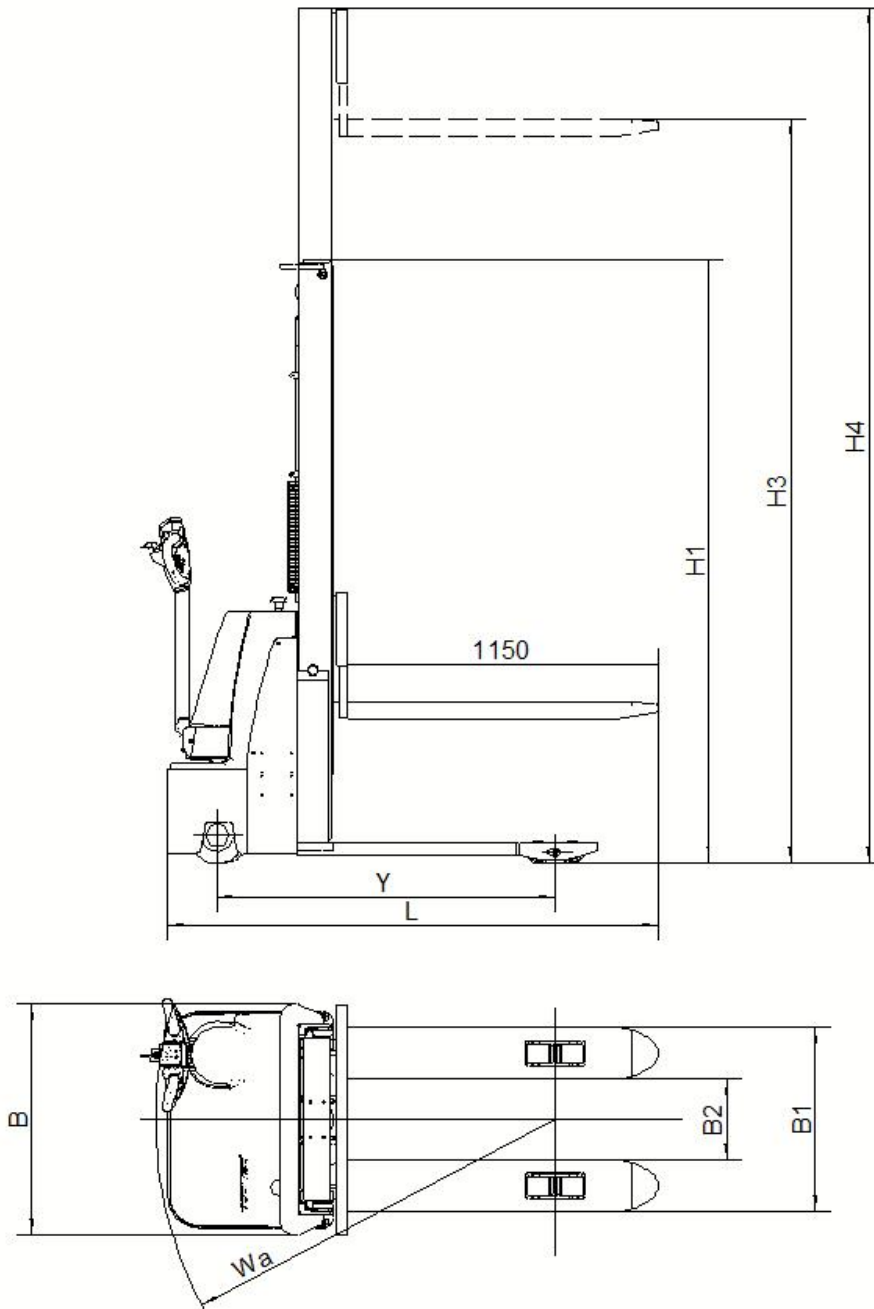
二、 Vehicle brief

1. Brief description of the main parts and components



1	protective screening	6	key switch	11	Maintenance-free battery pack
2	Door frame assembly	7	lever key	12	emergency stop switch
3	power unit	8	handle lever	13	Carrying wheel
4	lever key	9	Drive assembly	14	Goods fork frame
5	Belly switch	10	Secondary drive assembly		

2. Main technical parameters

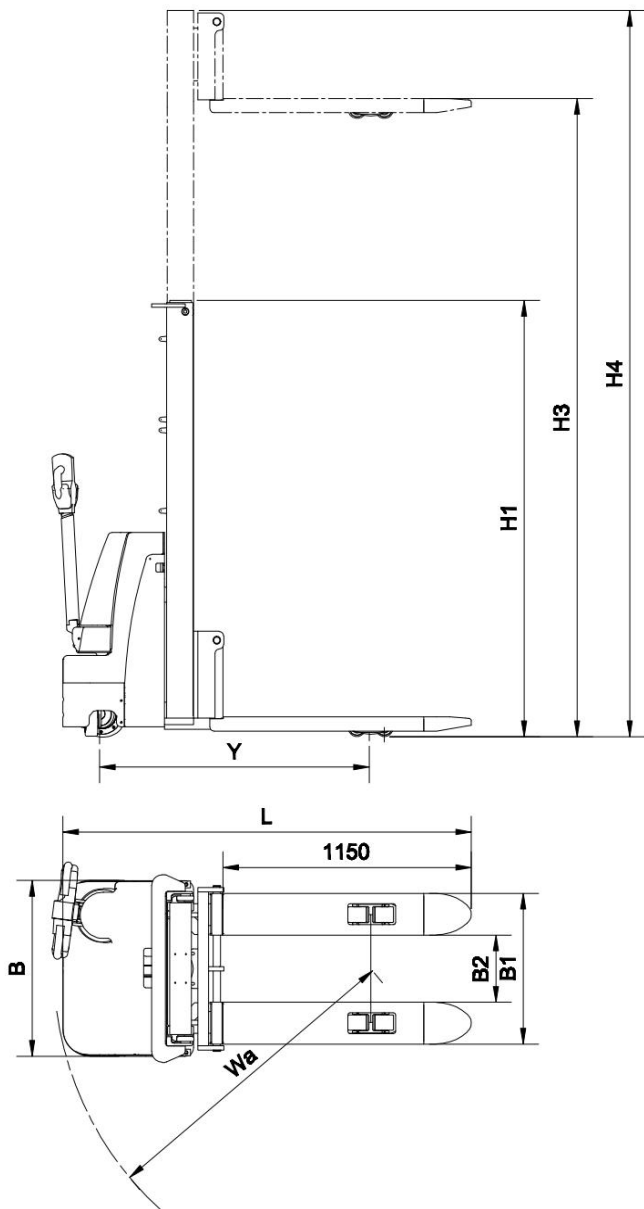


graph 1

Walkie Electric Pallet Sacker				
model				KLD20DS
function	Load capacity		kg	2000
	Load center	Q	mm	600
	lifting height	H3	mm	1600
	Travel speed (without load)		km/h	5.2
	Travel speed (with load)		km/h	4.8
	Lifting speed (without load)		mm/s	121
	Lifting speed (with load)		mm/s	81
	Lowering speed(without load)		mm/s	105
	Lowering speed(with load)		mm/s	103
	Gradeability(without load)		%	\
	Gradeability(with load)		%	\
	Service weight(with battery)		kg	814
	size	Overall length of frame	L	mm
Overall length of frame(with platform)			mm	\
Overall width of frame		B	mm	854
Overall height when mast lowered to lowest		H1	mm	2090
Overall height when mast lifted to highest		H4	mm	2090
Wheelbase		Y	mm	1243
Fork length			mm	1150
Fork outside width		B1	mm	680
Fork inside width		B2	mm	300
Fork thickness			mm	65
Fork height when fork lowered to lowest			mm	90
Minimum ground clearance			mm	15
1200x1000		Asts	mm	2335

	Minimum turning radius	Wa	mm	1460
	Minimum turning radius (with platform)	Wa1	mm	\
Tyre	Front (load) wheel		mm	85*70
	Driving wheel		mm	210*75
	Caster wheel		mm	130*55
	wheel type	polyurethane		
Power form)	Type of drive motor	DC Series motor		
	Rated output		kw	0.75
	Type of lift motor	DC Series motor		
	Rated output		kw	2.2
Battery	Voltage		V	24
	Capacity		AH	100
	Weight		kg	35

Mast type	Max fork height	Mast lowered	Mast extended
	KLD20DS	KLD20DS	KLD20DS
Duplex mast (2 stage)	2000	1480	2766
	2500	1730	3266
	3000	1980	3766
	3500	2230	4266



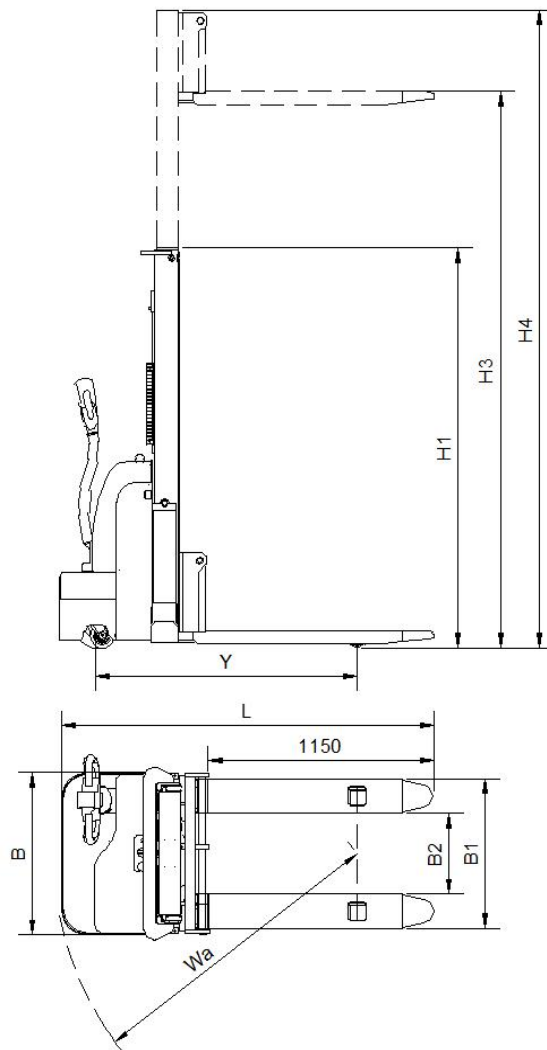
KLD20DD 步行式电动堆垛车(Walkie electric stacker)

Model (型号)				KLD20DD
Performance (性能)	Maximum load capacity(负载能力)		kg	2000
	load center (载荷中心距)	Q	mm	600
	Maximum lifting height (起升高度)	H3	mm	1600
	Travel speed (without load) (无负载行驶速度)		km/h	5.2
	Travel speed (with load) (负载行驶速度)		km/h	4.8
	Lifting speed (without load)(无负载起升速度)		mm/s	121
	Lifting speed (with load) (负载起升速度)		mm/s	81
	Lowering speed (without load) (无负载下降速度)		mm/s	105
Lowering speed (with load) (负载下降速度)		mm/s	103	

	Gradeability (without load) (无负载最大爬坡能力)		%	4
	Gradeability (with load) (负载最大爬坡能力)		%	3
	Service Weight (with battery) (重量含电池)		kg	596
Dimensions (尺寸)	Overall length of frame (整车长度)	L	mm	1890
	Overall length of frame(with platform)(整车长度带踏板)		mm	\
	Overall width of frame (整车宽度)	B	mm	800
	Overall height when mast lowered to lowest (门架降至最低 整车高度)	H1	mm	2090
	Overall height when mast lifted to highest (门架上升至最高 整车高度)	H4	mm	2090
	Wheelbase (轴距)	Y	mm	1243
	Fork length (货叉长度)		mm	1150
	Fork outside width (货叉外侧宽度)	B1	mm	680
	Fork inside width (货叉内侧宽度)	B2	mm	300
	Fork thickness (货叉厚度)		mm	65
	Fork height when fork lowered to lowest (货叉降至最低高 度)		mm	90
	Min ground clearance (最小离地间隙)		mm	15
	Theoretical width of minimum aisle for right-angle stacking (1200x1000) (直角堆垛通道最小理论宽度)	Asts	mm	2330
	Minimum turning radius (最小转弯半径)	Wa	mm	1490
	Minimum turning radius (with platform) (带踏板最小转弯半 径)	Wa1	mm	\
	Tire (轮胎)	Front wheel (承载轮)		mm
Drive wheel (驱动轮)			mm	210*75
Caster wheel (平衡轮)			mm	130*55
Wheel material (车轮类型)		polyurethane (聚氨酯)		
Electrical components (动力形式)	Drive motor type (驱动电机类型)	DC series motor(直流电机)		
	Rated output (功率)		kw	1
	Hoist motor type (起升电机类型)	DC series motor(直流电机)		
	Rated output (功率)		kw	2.2

Battery (电池)	Voltag (电压)	V	48
	Capacity (容量)	AH	50
	Weight (重量)	kg	15

Mast type (门架类型)	Max fork height (货叉最大高度)	Mast lowered (门架降低时高度)	Mast extended (门架延伸时高度)
	KLD20DD	KLD20DD	KLD20DD
Simplex or Duplex mast (2Stage)2级门架	2000	1480	2460
	2500	1730	2960
	3000	1980	3460
	3500	2230	3960

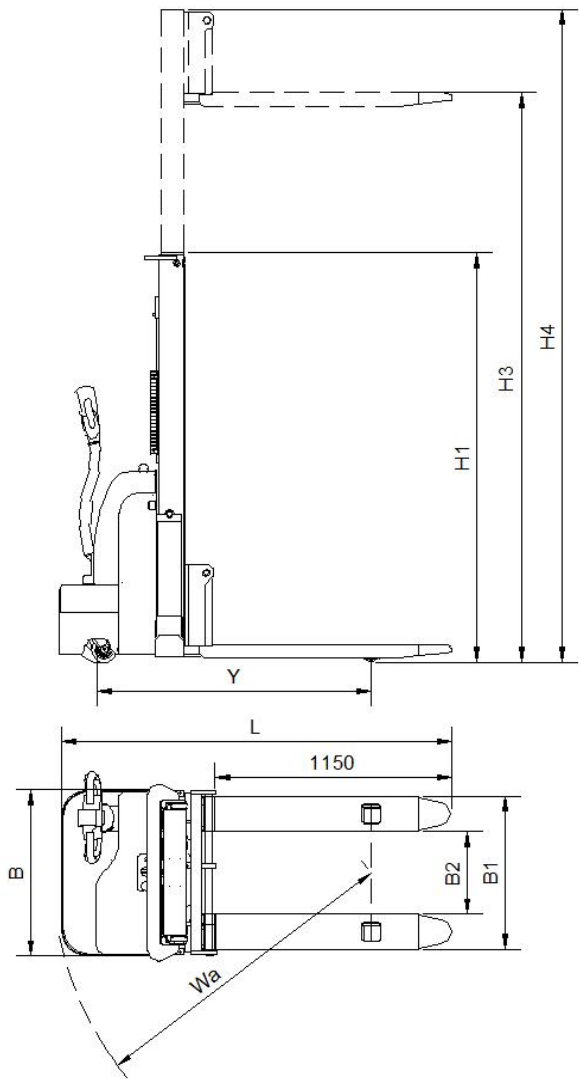


KLD-DA 步行式电动堆垛车(Walkie Electric Pallet Sacker)

Model (型号)				KLD16DA	KLD12DA
Performance (性能)	Maximum load capacity(负载能力)		kg	1600	1200
	load center (载荷中心距)	Q	mm	600	600
	Maximum lifting height (起升高度)	H3	mm	1600	1600
	Travel speed (without load) (无负载行驶速度)		km/h	5.2	5.2
	Travel speed (with load) (负载行驶速度)		km/h	4.8	4.8
	Lifting speed (without load)(无负载起升速度)		mm/s	121	121
	Lifting speed (with load) (负载起升速度)		mm/s	81	81
	Lowering speed (without load) (无负载下降速度)		mm/s	105	105
	Lowering speed (with load) (负载下降速度)		mm/s	103	103
	Gradeability (without load) (无负载最大爬坡能力)		%	\	\
	Gradeability (with load) (负载最大爬坡能力)		%	\	\
	Service Weight (with battery) (重量含电池)		kg	470	470
Dimensions (尺寸)	Overall length of frame (整车长度)	L	mm	1896	1896
	Overall length of frame(with platform)(整车长度带踏板)		mm	\	\
	Overall width of frame (整车宽度)	B	mm	800	800
	Overall height when mast lowerd to lowest (门架降至最低整车高度)	H1	mm	2090	2090
	Overall height when mast lifted to highest (门架上升至最高整车高度)	H4	mm	2090	2090
	Wheelbase (轴距)	Y	mm	1328	1328
	Fork length (货叉长度)		mm	1150	1150
	Fork outside width (货叉外侧宽度)	B1	mm	680	680
	Fork inside width (货叉内侧宽度)	B2	mm	340	340
	Fork thickness (货叉厚度)		mm	65	65

	Fork height when fork lowered to lowest (货叉降至最低高度)		mm	90	90
	Min ground clearance (最小离地间隙)		mm	15	15
	Theoretical width of minimum aisle for right-angle stacking (1200x1000)(直角堆垛通道最小理论宽度)	Ast s	mm	2415	2415
	Minimum turning radius (最小转弯半径)	Wa	mm	1540	1540
	Minimum turning radius (with platform) (带踏板最小转弯半径)	Wa 1	mm	\	\
Tire (轮胎)	Front wheel (承载轮)		mm	85*70	85*70
	Drive wheel (驱动轮)		mm	210*75	210*75
	Caster wheel (平衡轮)		mm	130*55	130*55
	Wheel material (车轮类型)	polyurethane (聚氨酯)			
Electrical components (动力形式)	Drive motor type (驱动电机类型)	DC series motor (直流电机)			
	Rated output (功率)		kw	0.75	0.75
	Hoist motor type (起升电机类型)	DC series motor (直流电机)			
	Rated output (功率)		kw	2.2	2.2
Battery (电池)	Voltag (电压)		V	24	24
	Capacity (容量)		AH	80	80
	Weight (重量)		kg	26	26

Mast type (门架类型)	Max fork height (货叉最大高度)	Mast lowered (门架降低时高度)	Mast extended (门架延伸时高度)
	KLD16DA	KLD16DA	KLD16DA
Simplex or Duplex mast (2Stage)2级门架	2000	1480	2460
	2500	1730	2960
	3000	1980	3460
	3500	2230	3960



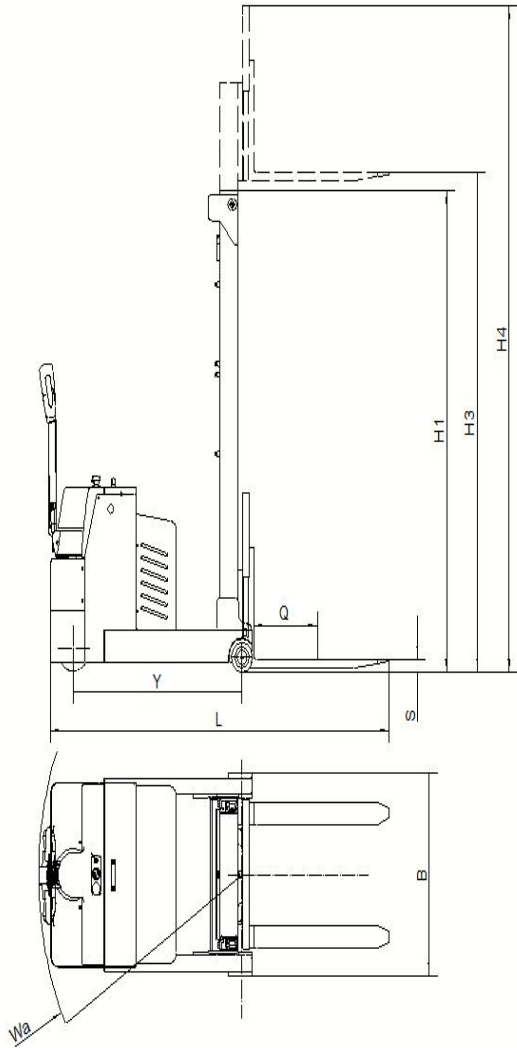
KLD-K 步行式电动堆垛车(Walkie Electric Pallet Sacker)

KLD-K 步行式电动堆垛车(Walkie Electric Pallet Sacker)					
Model (型号)				KLD16K	KLD12K
Performance (性能)	Maximum load capacity(负载能力)		kg	1600	1200
	load center (载荷中心距)	Q	mm	600	600
	Maximum lifting height (起升高度)	H3	mm	1600	1600
	Travel speed (without load) (无负载行驶速度)		km/h	5.2	5.2
	Travel speed (with load) (负载行驶速度)		km/h	4.8	4.8
	Lifting speed (without load)(无负载起升速度)		mm/s	121	121
	Lifting speed (with load) (负载起升速度)		mm/s	81	81
	Lowering speed (without load) (无负载下降速度)		mm/s	105	105
	Lowering speed (with load) (负载下降速度)		mm/s	103	103
	Gradeability (without load) (无负载最大爬坡能力)		%	\	\

	Gradeability (with load) (负载最大爬坡能力)		%	\	\	
	Service Weight (with battery) (重量含电池)		kg	656	656	
Dimensions (尺寸)	Overall length of frame (整车长度)	L	mm	1896	1896	
	Overall length of frame(with platform)(整车长度带踏板)		mm	\	\	
	Overall width of frame (整车宽度)	B	mm	800	800	
	Overall height when mast lowered to lowest (门架降至最低整车高度)	H1	mm	2090	2090	
	Overall height when mast lifted to highest (门架上升至最高整车高度)	H4	mm	2090	2090	
	Wheelbase (轴距)	Y	mm	1328	1328	
	Fork length (货叉长度)		mm	1150	1150	
	Fork outside width (货叉外侧宽度)	B1	mm	680	680	
	Fork inside width (货叉内侧宽度)	B2	mm	340	340	
	Fork thickness (货叉厚度)		mm	65	65	
	Fork height when fork lowered to lowest (货叉降至最低高度)		mm	90	90	
	Min ground clearance (最小离地间隙)		mm	15	15	
	Theoretical width of minimum aisle for right-angle stacking (1200x1000) (直角堆垛通道最小理论宽度)	Asts	mm	2415	2415	
	Minimum turning radius (最小转弯半径)	Wa	mm	1540	1540	
	Minimum turning radius (with platform) (带踏板最小转弯半径)	Wa1	mm	\	\	
	Tire (轮胎)	Front wheel (承载轮)		mm	85*70	85*70
		Drive wheel (驱动轮)		mm	210*75	210*75
Caster wheel (平衡轮)			mm	130*55	130*55	
Wheel material (车轮类型)		polyurethane (聚氨酯)				
Electrical components (动力形式)	Drive motor type (驱动电机类型)	DC series motor (直流电机)				
	Rated output (功率)		kw	0.75	0.75	
	Hoist motor type (起升电机类型)	DC series motor (直流电机)				
	Rated output (功率)		kw	2.2	2.2	

Battery (电池)	Voltage (电压)		V	24	24
	Capacity (容量)		AH	80	80
	Weight (重量)		kg	26	26

Mast type (门架类型)	Max fork height (货叉最大高度)	Mast lowered (门架降低时高度)	Mast extended (门架延伸时高度)
	KLD16K	KLD16K	KLD16K
Simplex or Duplex mast (2Stage)2 级门架	2000	1480	2460
	2500	1730	2960
	3000	1980	3460
	3500	2230	3960



KLA-A 平衡重托盘堆垛车(walkie counterbalanced forklift)

Model (型号)				KLA08A	KLA10A	KLA12A
Performance (性能)	Maximum load capacity(负载能力)		kg	800	1000	1200
	load center(载荷中心距)	Q	mm	450	450	450
	Maximum lifting height (起升高度)	H3	mm	1600	1600	1600
	Travel speed (without load) (无负载行驶速度)		km/h	5.2	5.2	5.2
	Travel speed (with load) (负载行驶速度)		km/h	4.8	4.8	4.8
	Lifting speed (without load) (无负载起升速度)		mm/s	121	121	121
	Lifting speed (with load)(负载起升速度)		mm/s	81	81	81
	lowering speed(without load) (无负载下降速度)		mm/s	105	105	105
	Lowering speed (with load) (负载下降速度)		mm/s	103	103	103

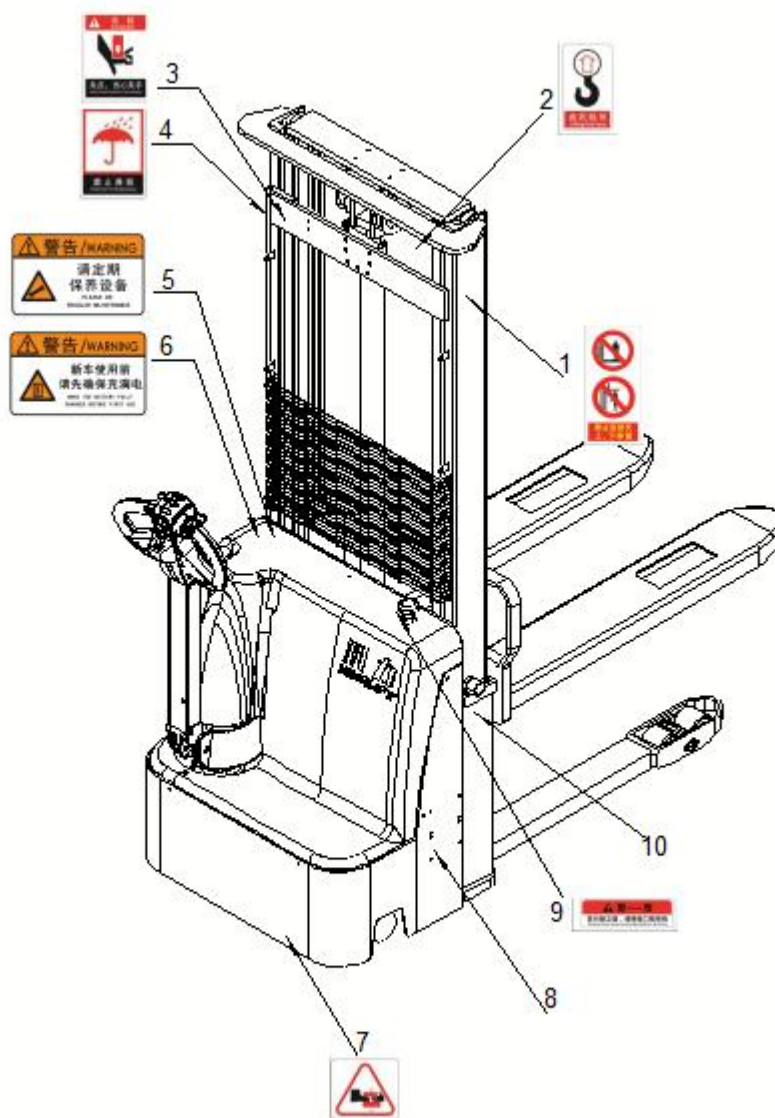
	Gradeability (without load) (无负载最大爬坡能力)		%	\	\	\
	Gradeability (with load)(负载最大爬坡能力)		%	\	\	\
	Service weight (with battery) (重量含电池)		kg	965	1060	1190
Dimensions (尺寸)	Overall length of frame(整车长度)	L	mm	2375	2375	2375
	Overall length of frame(with platform)(整车长度带踏板)		mm	\	\	\
	Overall width of frame (整车宽度)	B	mm	940	940	940
	Overall height when Mast lowered to lowest (门架降至最低整车高度)	H1	mm	2075	2075	2075
	Overall height when Mast lifted to highest (门架升至最高整车高度)	H4	mm	2376	2376	2376
	Wheelbase (轴距)	Y	mm	1145	1145	1145
	Fork length (货叉长度)		mm	920	920	920
	Fork spread width (货叉外侧宽度可调范围)		mm	210-670	210-670	210-670
	Fork width (货叉面宽度)		mm	100	100	100
	Fork height when fork lowered to lowest(货叉降至最低高度)	S	mm	60	60	60
	Min ground clearance (最小离地间隙)		mm	40	40	40
	Theoretical width of minimum aisle for right-angle stacking (1200x1000) (直角堆垛通道最小理论宽度)	As ts	mm	2755	2755	2755
	Minimum turning radius (without platform) (不带踏板最小转弯半径)	W a	mm	1380	1380	1380
Minimum turning radius (with platform) (带踏板最小转弯半径)	W a1	mm	\	\	\	
Tyre (轮胎)	Front wheel(承载轮)		mm	140*80	140*80	140*80
	Drive wheel(驱动轮)		mm	210*75	210*75	210*75
	Caster wheel (平衡轮)		mm	\	\	\
	Wheel material (车轮类型)	polyurethane (聚氨酯)				
Electrical components	Drive motor type (驱动电机类型)	DC series motor(直流电机)				
	Rated output (功率)		kw	0.75	0.75	0.75

(动力形式)	Hoist motor type (起升电机类型)	DC series motor (直流电机)				
	Rated output (功率)		kw	2.2	2.2	2.2
Battery (电池)	Voltage (电压)		V	24	24	24
	Capacity (容量)		AH	100	100	100
	Weight (重量)		kg	35	35	35

Mast type (门架类型)	Max fork height (货叉最大高度)	Mast lowered (门架降低时高度)	Mast extended (门架延伸时高度)
	KLA08A	KLA08A	KLA08A
Simplex or Duplex mast (2Stage)2级门架	2000	1470	2766
	2500	1720	3266
	3000	1970	3766

3. Description of safety devices and safety marks

(A) Location and description of the safety signs



1	Sign prohibiting forks from moving up and down	5	Regular maintenance mark	9	Warning
2	Lifting sign	6	New car charging sign before use	10	Frame Number
3	Beware of the pinched hands	7	Beware of the pinched foot		
4	No rain sign	8	Nameplate		

(b) safety device

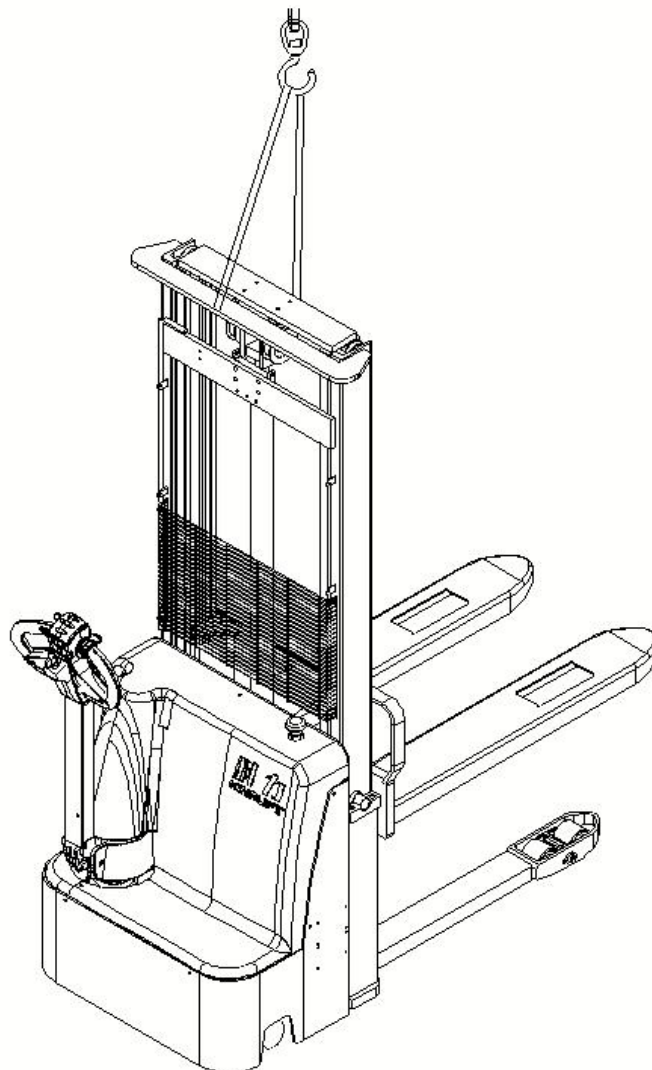
This stacker has a key switch (6) to stop all functions and fail the electromagnetic braking. After checking the function of the controller, pull up the switch to operate the stacker. Before the operation, manually enter the password to start the vehicle.

If you do not operate this stacker, to prevent unauthorized use, press the emergency stop switch(12)
This stacker is equipped with a belly switch (5).When the vehicle moves to the operator, if only by touching the belly switch within the operating range of the handle, the vehicle can drive in the direction of deviation from the operator.

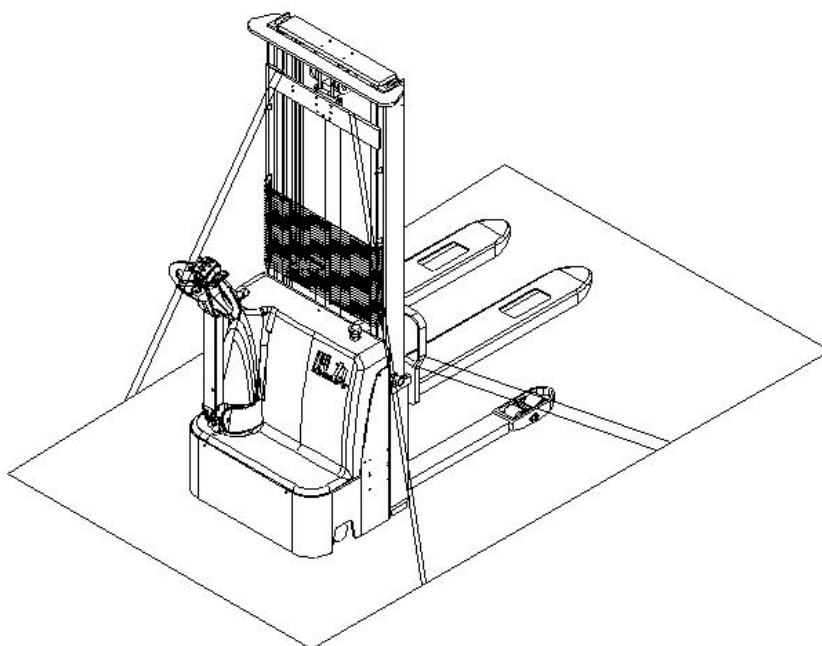
4. Storage and transportation

(a) transport

Remove the goods during transportation, drop the fork to the lowest level and press the emergency stop switch and close the key switch. Secure the vehicle with professional lifting equipment



In the process of transportation, the stacker should be firmly fixed on the transport vehicle;



(b) leave with

Remove the goods during storage and reduce the vehicle to the lowest position. Press the emergency stop switch and turn off the key switch.

Note: For the first time after long-term storage, the vehicle performance must be checked and tested before use.

5. Description of the nameplate and the load curve



托盘堆垛车

PALLET STACKER

型号 <input type="text"/> <small>Model</small> 额定电压 <input type="text"/> V <small>Rated Voltage</small> 最大能力 <input type="text"/> Kg <small>Maximum Capacity</small> 起升高度 <input type="text"/> mm <small>Lift Height</small> 无载、无蓄电池自重 <input type="text"/> Kg <small>No-load, No Battery Weight</small> 许可证编号 <input type="text"/> <small>License code</small>	额定载重量 <input type="text"/> Kg <small>Load Capacity</small> 自重（无载） <input type="text"/> Kg <small>Weight (No-load)</small> 允许蓄电池重量 <input type="text"/> ~ Kg <small>Allowable Battery WT</small> 出厂编号 <input type="text"/> <small>Series No</small> 设备代码 5110 <small>Equipment code</small> 规格 <input type="text"/> <small>specifications</small>
--	---

本车仅限在工厂厂区、旅游景区、游乐场所使用
 江苏科力机械有限公司
 JIANGSU KING-LIFT EQUIPMENT CO. LTD
 中国江苏省丹阳市界牌镇红光工业园
 Tel: (86) 511-8685-2188 Fax: (86) 511-8638-1853

The configuration of each car may not be the same. Please be sure to check the nameplate to

KLD-DA/K/A/DS/DD载荷曲线表			
起升高度 (mm)	600载荷中心距 (kg)		
	KLD12DA/K/A	KLD16DA/K/A	KLD20DS/DD
1600	1200	1600	2000
2000	1200	1600	2000
2500	1200	1600	2000
3000	800	1200	1600
3500	600	800	1200

confirm its attributes before using it.

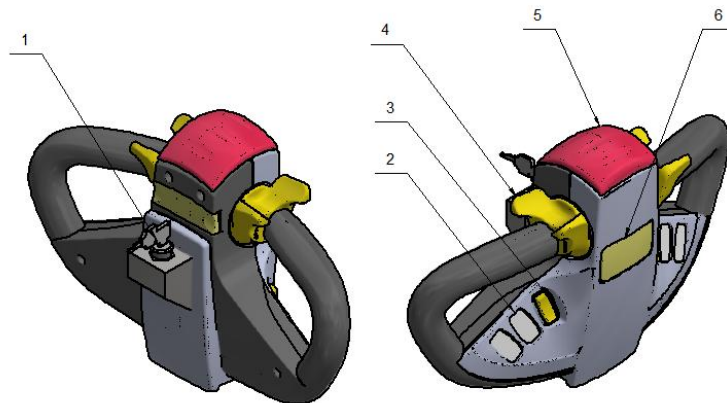
When the height of the lift increases, the load capacity of the vehicle decreases accordingly. The load plot represents the rated lifting weight for the different lifting heights.

(1) The configuration of the vehicle changes with the customer's order. Before using the vehicle, please check the load curve diagram to confirm the carrying capacity of the vehicle.

(2) The curve parameters on the load curve diagram shall correspond to the compact and uniform cargo, and shall not exceed the load limit. Otherwise, the shadow
Stability of the vehicle and strength of related parts.

6.operation declaration

pilot lever



1	key switch	3	Up and down switch	5	Emergency Stop Reverse Switch
2	coulombmeter	4	Forward back switch	6	suona

ID card operation

If the car is equipped with an ID card, close the ID card to the password lock button panel. If the ID card is a valid ID card, the password lock will sound a brief beep, and then the green indicator light is always on, indicating that the password lock is working normally.

firing

Please proceed in the following order, otherwise the forklift will not operate:

1. Ensure that the power socket is plugged.
2. Open the emergency stop switch and place the key switch in the open position.
3. Ensure that the battery group has enough power.

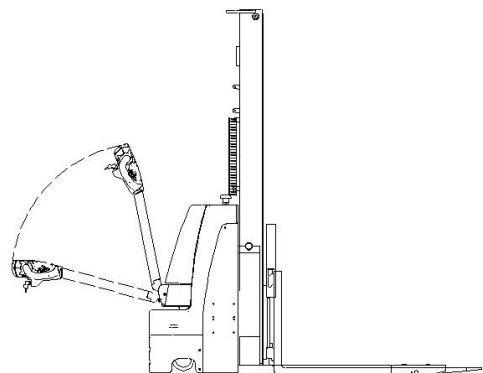
go

Start the vehicle with the key switch and press the handle down to the operating area as shown

Turn the acceleration button to the desired direction (forward or back)

braking

1. When the handle is moved to the top or bottom end, the



forklift will realize the brake.

2. Stop running the forklift truck by releasing the driving direction switch and returning it to the neutral position.

turn

1. The steering is controlled by the control arm, and the steering angle can be in the left and right directions 90°Any position within the range.

2. When the forklift encounters an obstacle, it should not force through. It can turn the control arm to move forward or retreat and bypass the obstacle.

stop

1. Release the direction switch.

2. Release the control arm, and the long arm will automatically return to the parking brake position.

3. Lower the cargo fork to the lowest level, so that there is no system pressure in the hydraulic system.

4. Place the key switch in position.

pay attention to!

Driving without permission is not allowed.

If you leave, please take the keys away with you.

If the operator's hands or shoes are stained with oil, it is easy to operate the error, so that the forklift truck loses control, so you should dry your hands or shoes before driving.

If the forklift is operated with low potential for a long time, the life of the battery should not be started before the battery is charged.

Non-operable forklift truck with serious functional defects endangering safety. Before daily work, check the following safety functions first:

(A) The horn shall function normally.

(B) The operation function is intact.

(c) The brakes is normally.

(D) The hydraulic function is normal.

(C) Pre-use verification

1. If there is damage during transportation, do not continue to use it, please contact the dealer immediately.

2. The lubricating oil has been added and filled with hydraulic oil before delivery.

3. After the battery is charged, please check the height and density of the electrolyte.

4. The charger should be ready to prepare for the future charging.

3. safe code

summary

1. Before using the forklift every day, all safety switches and equipment should be checked in advance to ensure that these safety facilities are in good condition.
2. Check that all warning and design parameter signs on the board are not damaged.
- 3, if the stacking forklift is damaged or the fault affects the safe use, the use is prohibited.
- 4, the forklift truck in the maintenance or adjustment, should be responsible for by the professional personnel.

Forklift operation

In a certain range of use height, the forklift truck can be raised and lifted freely. Special manufacturing must be made for forklifts used in freezers. For the design and manufacture:

- 1, the air contains flammable and explosive dust or gas occasions.
- 2, as a tractor for other cars.
3. To transport or lift people.

Responsibilities of the operator

1. The forklift can be operated after training and approval.
2. Abide by this manual and relevant local safety regulations, rules, and traffic rules.
- 3, the hands and feet with oil, it is strictly prohibited to operate the forklift truck.

Operational site

1. Stacking forklifts can only operate on smooth, hard pavement, such as concrete or asphalt pavement. Do not work in oil pollution areas to avoid slipping.
2. Ensure that the ground can withstand the total weight of the stacking forklift, that is, the dead weight of the forklift, the load weight and the weight of the operator.
3. Operation guidance during driving:
 - (A) No sudden brake or turn is allowed at high speed.
 - (B) Keep the cargo in the position.
 - (C) Slow down on the slope, keep the goods in the lowest position, and prohibit lifting the raised head or fork on the slope during driving.
 - (D) If the road slips, slow down to prevent the forklift from idling or overturning.
 - (E) Except for the loading and unloading of goods, the cargo fork shall fall at a height of no more than 200mm off the ground during driving. Do not lift and rotate the cargo simultaneously.

4. If the view is blocked, please ask others to guide around to ensure safety.
5. Keep a safe distance from the vehicles, personnel and objects in front of you
- 6, the horn should sound when speeding.
7. Stacking forklift is not used to transport personnel.
8. Before the forklift enters the elevator, ensure that the elevator can withstand all the weights.
9. Loading and unloading of goods:
 - (a) Only when loading and unloading goods, can operate the handle and keep a distance from the surrounding personnel. Do not lift the handle, and ensure that the height of the handle from the ground does not exceed 200mm.
 - (b) The loaded and unloaded goods shall be kept equal at the left and right positions on the fork, unstable or unsafe and not allowed for transportation.
 - (c) When the cargo rises, never touch the gantry to prevent clip injury.
 - (d) Can only load and unload the cargo within the maximum lifting weight and load center allowed by the forklift, and adjust the cargo according to the external size of the fork. See the loading curve for more details.
 - (e) Special care shall be taken when loading and unloading excessive and excessive loads. Handling and unloading goods with high height, the forklift shall be equipped with block shelves.
10. Parking precautions:
 - (a) After the forklift truck stops stable, the cargo fork should be placed to the lowest point.
 - (b) Forklifts are prohibited from parking on the slope.
 - (c) The forklift is parked at the designated place.
 - (d) Forklifts are not parked at the emergency exit.
 - (e) Forklift trucks are prohibited from stopping in places that hinder work.
 - (f) The power must be turned off after parking.

4. Battery

charge

1. When charging, smoking or using an open flame is strictly prohibited.

Charge the battery, can use the automatic charger, pay attention not to charge insufficient or overcharge, so as not to damage the battery.

The maximum charging current of the recharger is:

Battery Battery (Ah)	charging generator (A)
50/80/100	8/10/15

2. Charging preparation

(A) After parking, place the key switch in the closing position, press the emergency stop switch and pull out the key.

(B) Pull out the power socket and plug the plug on the charger with the battery power plug (active plug).

(C) Turn on the AC and charge the charger.

pay attention to!

Maintain a good ventilation environment when charging, especially in a closed area. In the process of charging, there is hydrogen and oxygen in the battery, when the open fire, electric spark will cause explosion!

Therefore, before unplugging the power socket, the charging power supply should be cut off.

Battery maintenance

1. in order to ensure the life of the battery, the battery should be fully charged before put into use, the battery can not be used.

2. try to avoid overcharge and discharge. Overcharge and overdischarge will seriously affect the performance and life of the battery.

3.the battery should be charged in time after use, not less than two hours each time.

4. Good ventilation should be maintained when charging, and fireworks are strictly prohibited.

5. Debugging

order number	hitch	cause	processing method
1	The fork can't rise The highest height	-The hydraulic oil is not enough	-Filling hydraulic oil
2	The fork cannot rise	-No hydraulic oil -Hydraulic oil is not pure	-Filling hydraulic oil -Replace hydraulic oil
3	Pump station motor Can't run	-The emergency switch is not turned on -Battery voltage is too low -Power cord connector is loose -Damaged motor contactor	-Lift up the emergency switch — charge — screw home — change for new
4	The fork cannot drop	-Deformation of the piston rod or cylinder block caused by the cargo bias to one side or overload. -The fork stops at a higher position for a long time, causing the piston rod to expose and rust for a long time, blocking the movement of the piston. -The release valve of the hydraulic pump station	-Replace the piston rod or cylinder block -Please drop the fork to the lowest position when not in use, and pay attention to lubricate the piston rod. — Replace the release valve of the pump station

		cannot be opened due to wear or damage.	
5	oil leak	-Seals are aged or damaged -Component rupture	— change for new — change for new
6	The fork from the drop	-The hydraulic oil impurity causes the release valve not to be closed -Seals are aged or damaged -The release valve is damaged	-Replace hydraulic oil — change for new — change for new
7	storage battery Can't charge	-Battery damage - -The charging plug is loose	— change for new -Plug in

Note: Self-maintenance is strictly prohibited without authorization or training.

VI. Maintenance

After 500 hours of operation, a routine maintenance should be carried out. The efficiency, life and safety of the forklift truck depend on the daily maintenance.

Repair of forklift truck and replacement of accessories shall be provided by the company to ensure quality. It is recommended to contact the product agent or the after-sales service department of the company. To make your forklift truck can run more safely and economically.

Safety rules for the maintenance work

Only through systematic learning can the maintenance work be carried out.

1. Keep the maintenance site clean and hygienic.
2. During maintenance, do not carry loose items and valuables.

pay attention to!

To repair the forklift electrical system and prevent short circuit or combustion, remove the watch, earrings or metal trim.

- 3, before the forklift maintenance, you should first unplug the power socket, disconnect the power supply.
4. Before opening the back cover, put the key switch in the closing position and press the emergency stop switch.
5. Before checking the hydraulic system, the cargo fork should be lowered to release the system pressure.
6. When checking the oil leakage condition of the car body, do not contact it directly with your hands to avoid scalding.
7. The oil temperature in the transmission device or hydraulic system may be high, so the gear oil or hydraulic oil should be replaced after the forklift truck is cooled to prevent the high oil temperature from causing combustion.
8. The hydraulic system should be filled with a new hydraulic oil. It is recommended to use the no. 46 hydraulic oil.

pay attention to!

Hydraulic oil is not clean will affect the precision hydraulic components, so that the entire hydraulic system capacity is reduced. The use of different grades of hydraulic oil damages the hydraulic components and also affects the system capability. Therefore, when adding or replacing hydraulic fluid, pay attention to use the uniform number.

9. Please abide by the relevant laws and regulations, protect the environment, store and discharge oil

according to the regulations, and prohibit to discharge it into the sewer pipe.

10. If there is a welding requirement for the car body, in order to prevent the welding current from entering the battery, please cut off the power supply.

11, in the absence of reliable support, all parts of the human body can not enter the forklift gantry or fork below.

pay attention to!

Improper support, the forklift will dump and hurt people. If the forklift is not protected by lifting equipment or support, it is prohibited to work under the forklift.

Maintenance work that the user can complete

Daily maintenance and safety inspection:

1. It is the operator's responsibility for the routine maintenance and inspection of forklift trucks.
- 2, forklift does not carry out daily maintenance, will affect the safety and reliability of forklift, easy to lead to serious accidents.
- 3, Check out the problem or found the fault should immediately stop using and start to repair.
4. In order to maintain a good use state, necessary inspection and maintenance of the vehicle every day.

At this time, inspection should be emphasized:

Site number	check point	scope of examination
1	operation control	Check that it is properly functional
2	Belly switch	Check that it is properly functional
3	suona	Check that it is properly functional
4	turn	Check that it is properly functional
5	hydraulic unit	Check that it is properly functional
6	coulombmeter	Check that it is properly functional
7	hydraulic pressure system	Check the oil level and check for oil leakage
8	actuating device	Check for any abnormal noise and oil leakage
9	brake coupling	Check for normal operation and poor contact
10	transmission	Check that it is properly functional

11	wheel	Check for any damage and remove oil stains and metal debris
12	frame	Check whether there is any damage and remove the oil pollution
13	Goods fork	Check for any deformation or cracks
14	hydraulic jack	Check for any damage and oil leakage

Clean forklift

Routine cleaning is performed weekly and is important to ensure its reliability. Pay attention to unplug the power socket before cleaning to avoid damage to electrical system caused by short circuit.

External cleaning:

1. Remove the attachments to the wheels every day to maintain flexible rotation.
2. When cleaning the electrical components, compressed air should be used to clean the motor dust.

The dust in the line should not be wiped with a wet cloth.

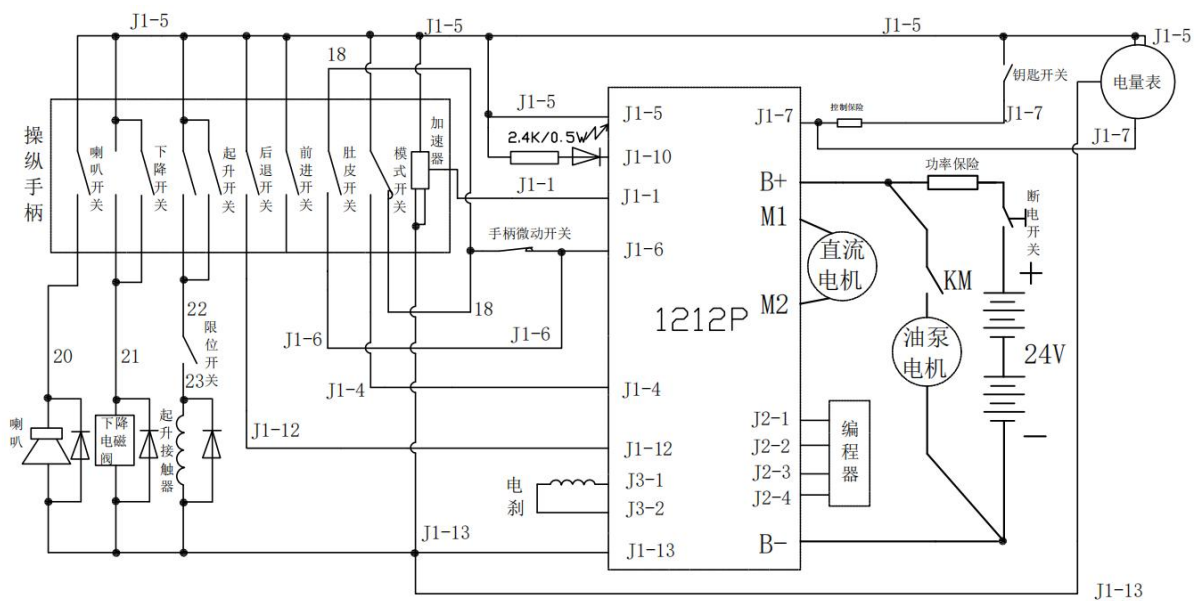
3. After cleaning, lubricating grease should be added to the relevant parts.

pay attention to!

During cleaning, the electrical components cannot be washed with high pressure flushing device, and the electrical components on the circuit board cannot be damaged to avoid short circuit.

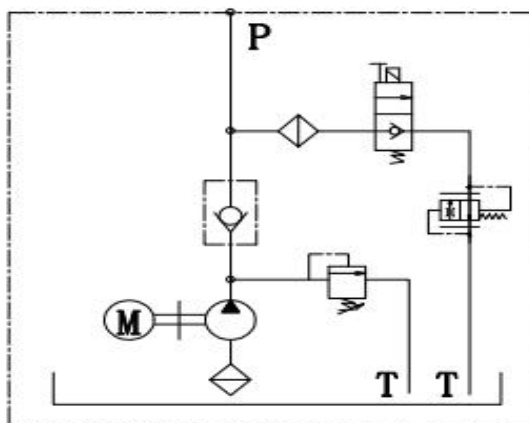
七、schematic diagram

Electrical schematic diagram

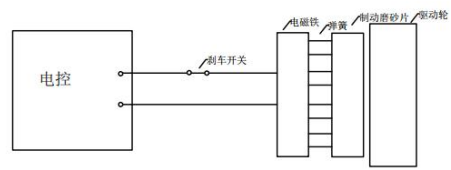


(KLD-DS)

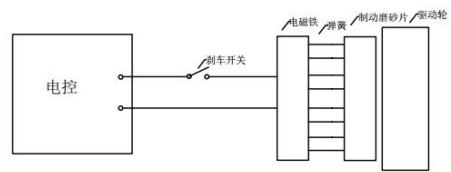
1.Hydraulic schematic diagram



2.Brake schematic diagram



整车行车状态



停车制动状态